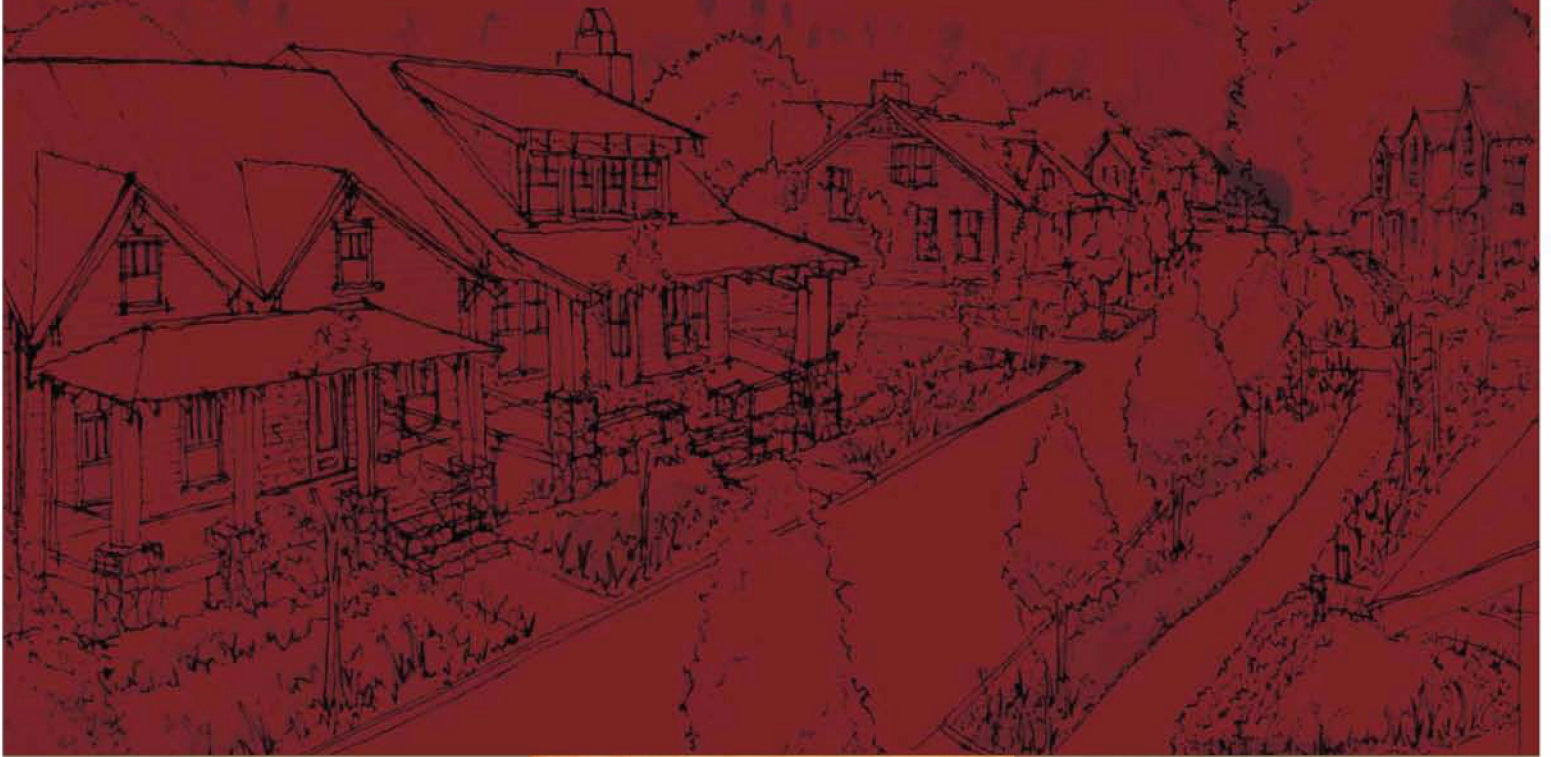


# *Village Founder*

LOTS & FLOOR PLAN SAMPLE BOOK



TEL 828.421.1843

[CONTACTUS@SANCTUARYVILLAGE.COM](mailto:CONTACTUS@SANCTUARYVILLAGE.COM) | [WWW.SANCTUARYVILLAGE.COM](http://WWW.SANCTUARYVILLAGE.COM)

MARKET STREET, FRANKLIN, NC 28734





# Sanctuary Village



At Sanctuary Village, we're not just selling lots and homes, we're selling a community in the truest sense. The primary amenity of Sanctuary Village is not a fancy clubhouse or swimming pool with waterslides, it's the Town of Franklin. Settled in 1855, downtown Franklin remains a quintessential All-American town. Historic Main Street is an easy walk from the Village and is lined with quaint shops and restaurants. The Town Square plays host to festivals year-round. And the Little Tennessee Greenway, grocery stores, and Angel Medical Center are right nearby.

Unlike so many mountain developments where buyers purchase property and hope the developer fulfills the vision, the Village's primary amenity has been here for over 150 years. Finding an in-town front porch community with architect designed arts and crafts homes, walking trails and a European-style plaza is extremely rare. But that's what Sanctuary Village offers. All within an easy walk to historic Main Street.

This book contains just a few of the over 100 possible floor plans. To view more plans, please visit [www.MoserDesignGroup.com](http://www.MoserDesignGroup.com) and [www.AllisonRamseyArchitect.com](http://www.AllisonRamseyArchitect.com)

**WHERE HOMES AND FRIENDSHIPS ARE BUILT FOR A LIFETIME**





# Sanctuary Village







# Founders Lots





## Lot Dimensions

- Lot 33** 60' wide x 150' deep
- Lot 34** 50' wide x 150' deep
- Lot 41** 47' wide x 85' deep
- Lot 42** 48' wide x 85' deep
- Lot 43** **Sold**
- Lot 47** 50' wide x 90' deep
- Lot 48** 48' wide x 87' deep
- Lot 49** 48' wide x 85' deep
- Lot 50** Under Contract
- Lot 68** 60' wide x 100' deep
- Lot 69** 50' wide x 100' deep

**\*Dimensions are approximate only**



 Mansion Flats 12-24 Units	 Village Houses 72-80 Units	 Tree Houses 22-25 Units	 Civic/Commercial 3-5 Units	 Mountain Cottages 42-48 Units
--	---	--	---	--



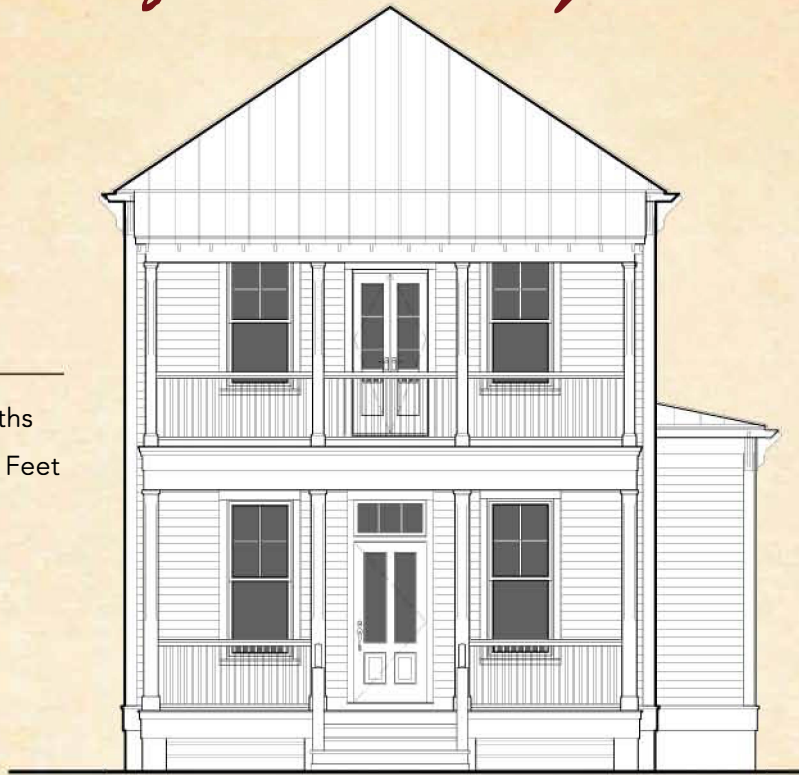


# Cozy Cottages

## Cider Ridge

3 Bedrooms | 2.5 Baths  
1,381 Heated Square Feet

Dimensions  
38' wide x 55' deep







# Cozy Cottages



**Pigeon River Cottage**  
Available 2024 | Lot 14

2 Bedrooms | 2.5 Baths  
2,100 Heated Square Feet

Dimensions  
25' wide x 42' deep







# Mansion Flats



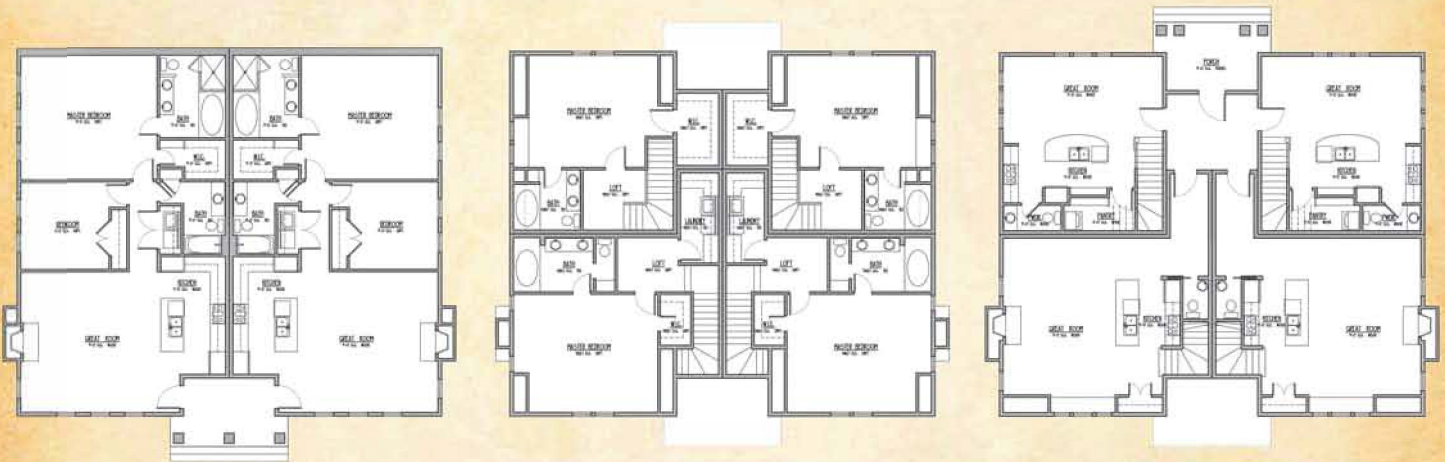
## Six-Plex Mansion Flats

### First Floor Units

- Single-Level
- 2 Bedrooms | 2 Baths
- Fireplace
- Handicapped access

### Second Floor Units

- 1 Bedroom | 1.5 Baths
- 1,286 Square Feet Per Flat (for units with fireplace)
- 1,027 Square Feet Per Flat (for units without fireplace)





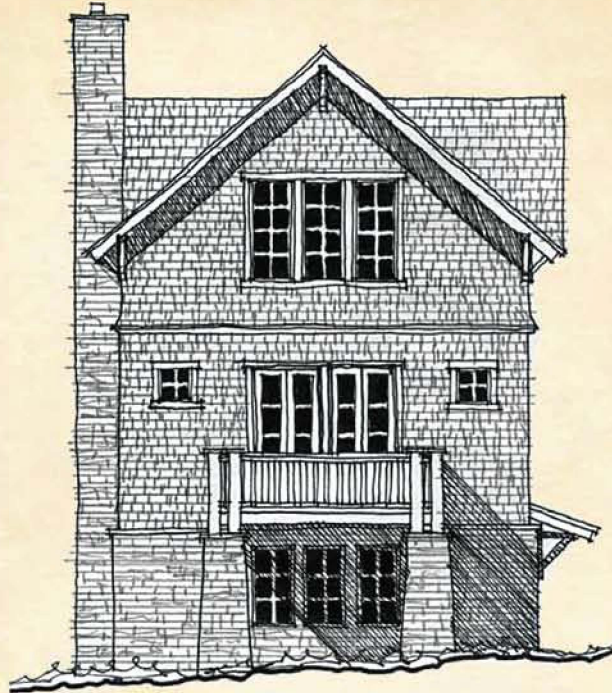


# Interior Lots

## Red Oak

3 Bedrooms | 2.5 Baths  
1,780 Heated Square Feet

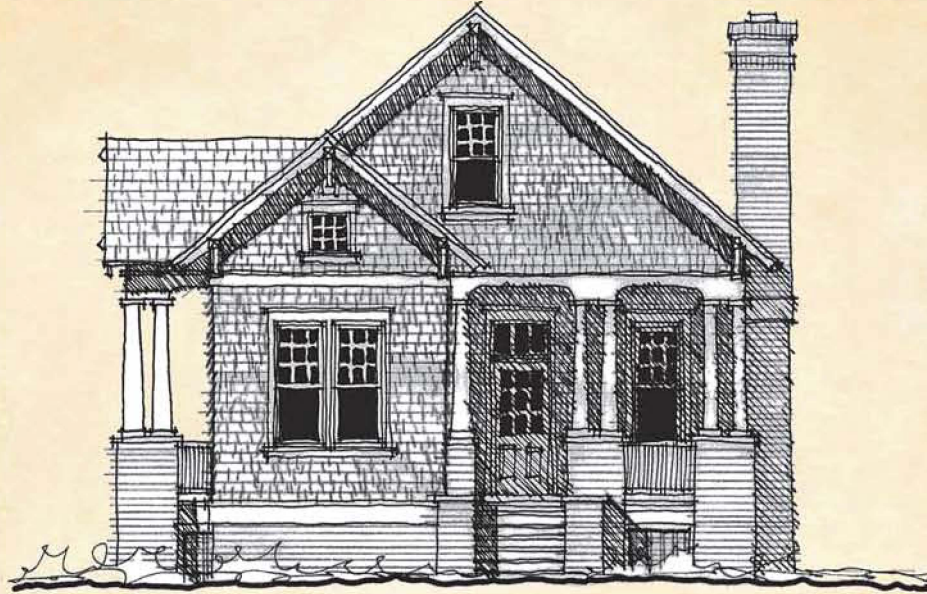
Dimensions  
25' wide x 61' 10" deep







# Interior Lots



## Saluda

3 Bedrooms | 2 Baths

1,462 Heated Square Feet

Dimensions

31' 8" wide x 63' deep





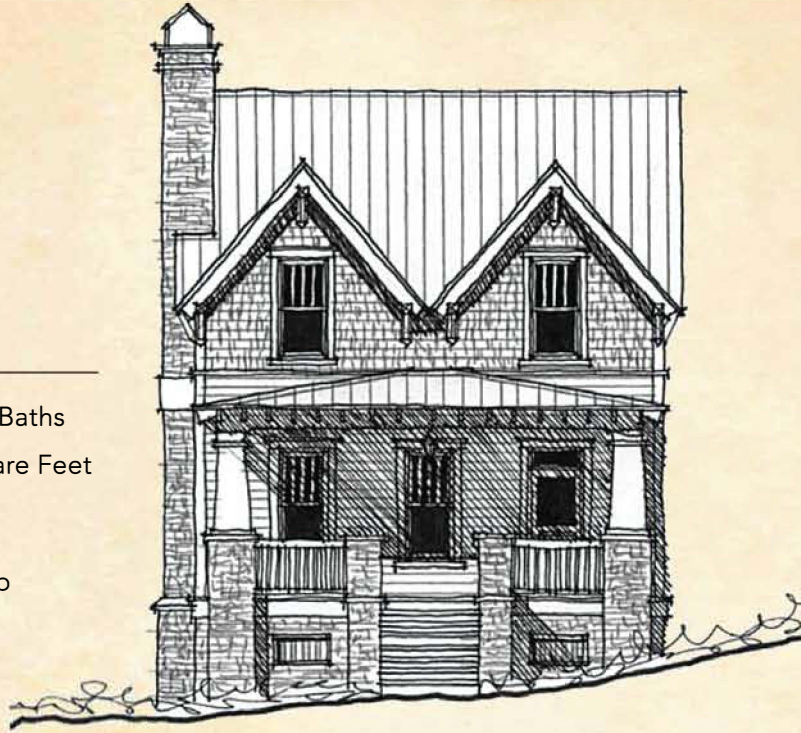


# Interior Lots

## Bartlett

3 Bedrooms | 2.5 Baths  
1,794 Heated Square Feet

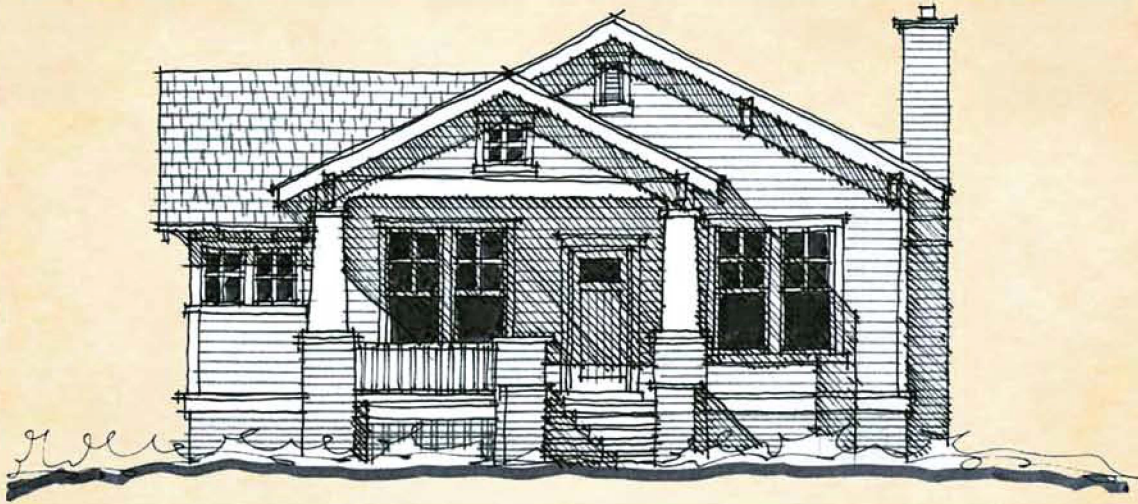
Dimensions  
25' wide x 64' deep







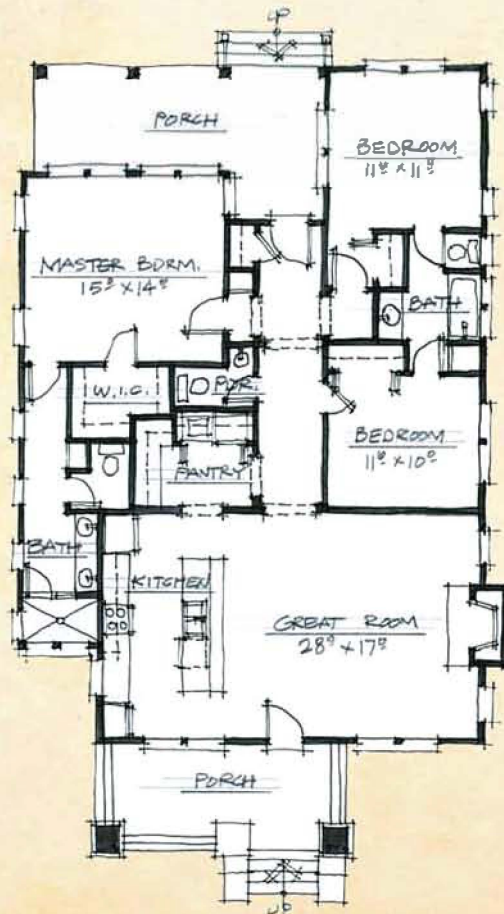
# Interior Lots



## Swannanoa

3 Bedrooms | 2.5 Baths  
1,543 Heated Square Feet

Dimensions  
36' 10" wide x 59' 6" deep





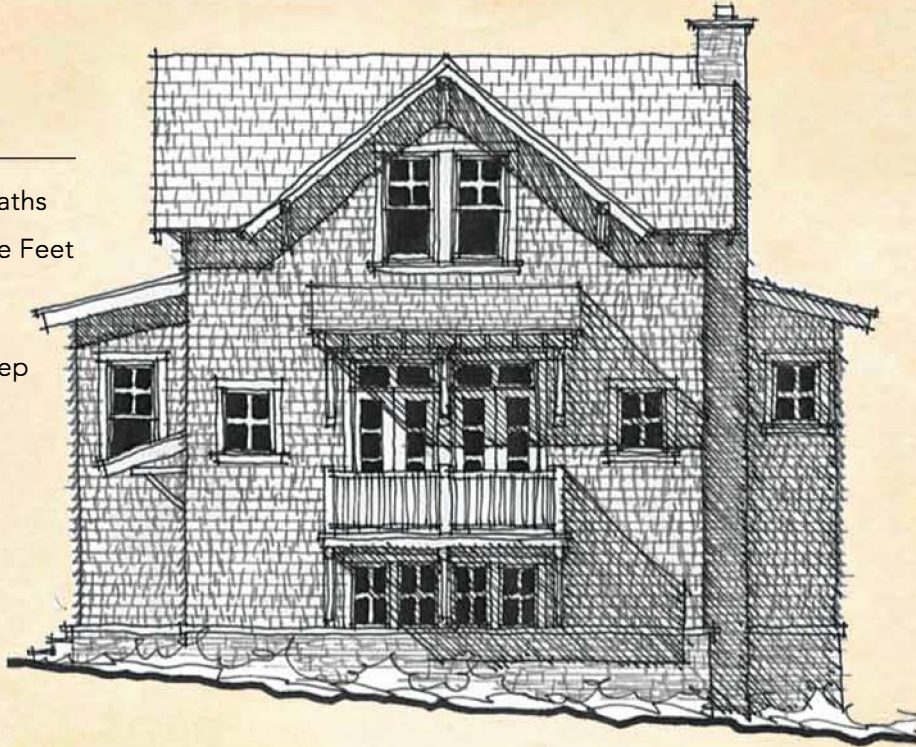


# Interior Lots

## Cullowhee

3 Bedrooms | 3.5 Baths  
1,879 Heated Square Feet

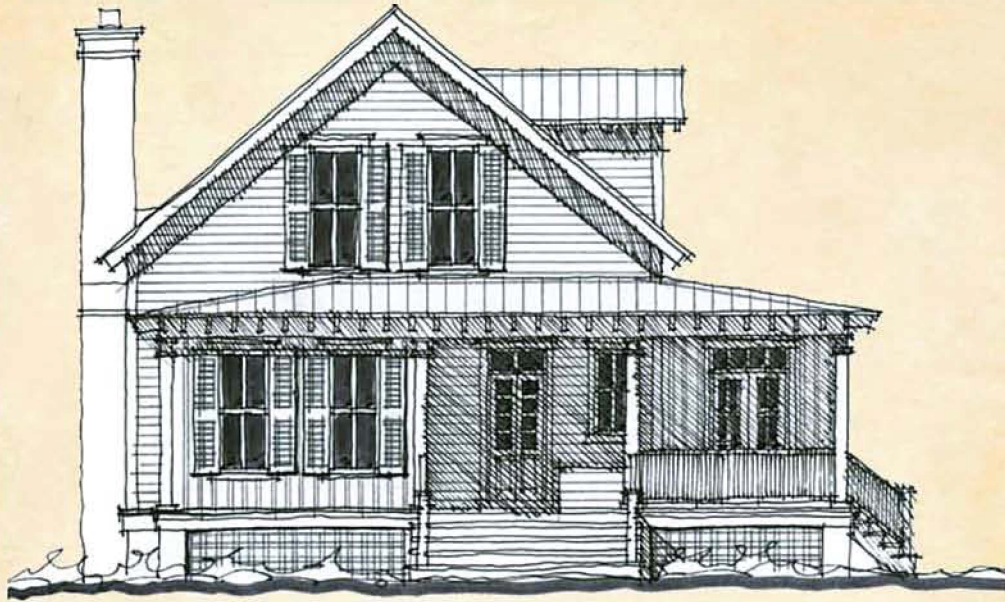
Dimensions  
35' wide x 61' 4" deep







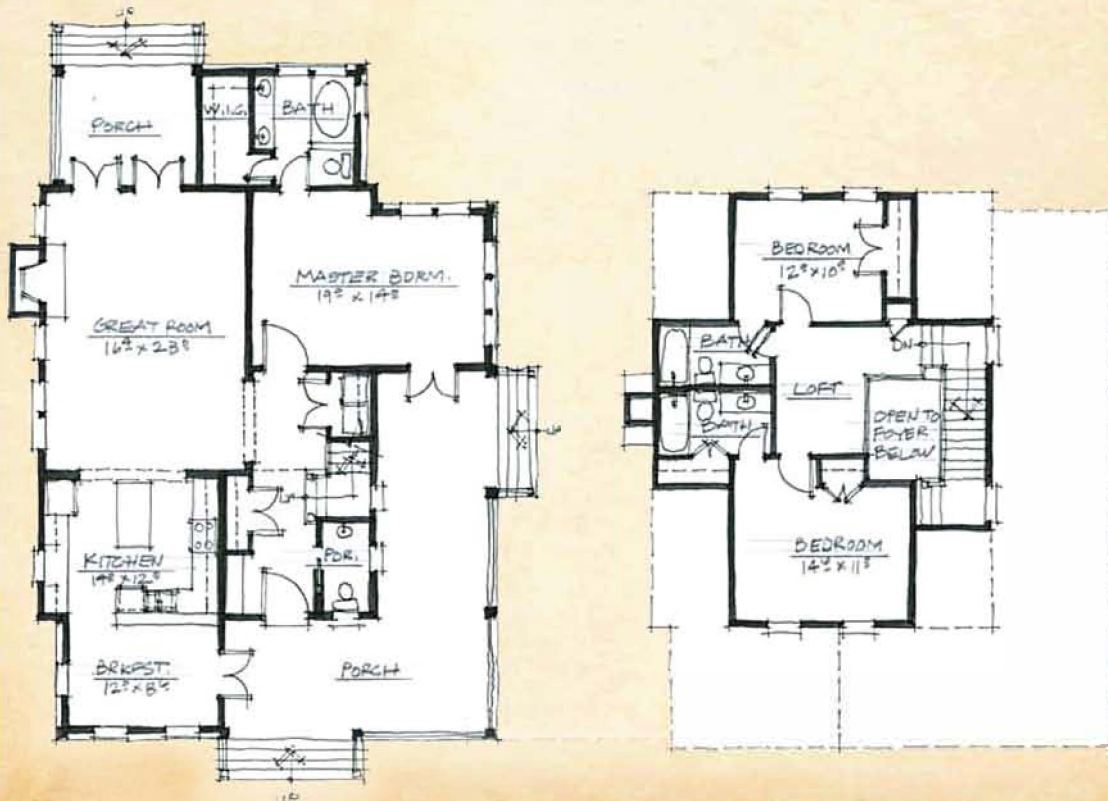
# Corner Lots



Laurel Park

3 Bedrooms | 3.5 Baths  
2,009 Heated Square Feet

Dimensions  
40' 2" wide x 55' 4" deep





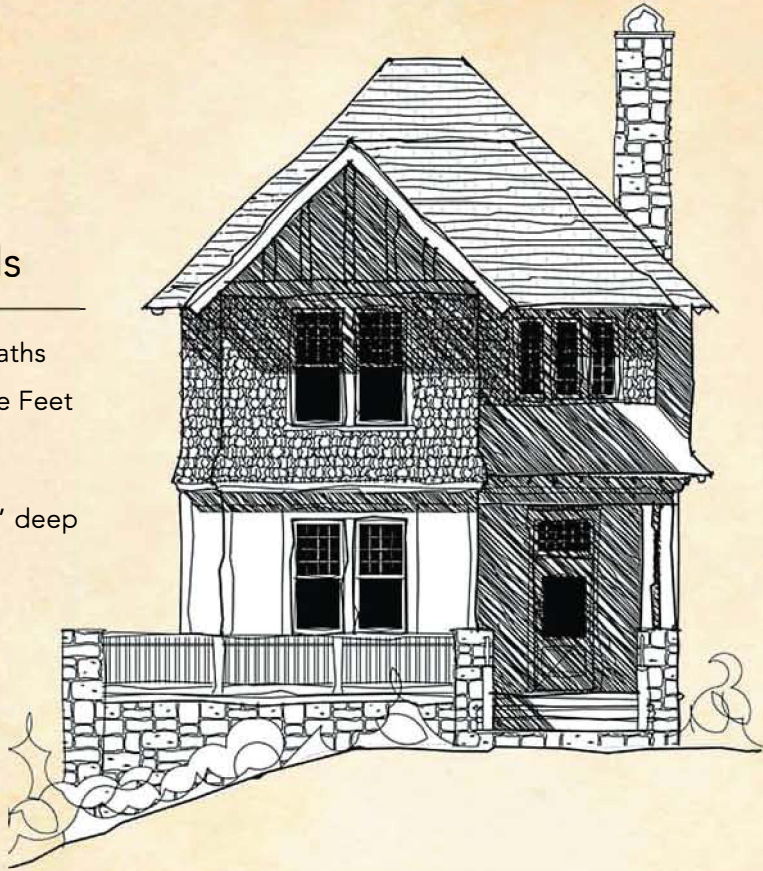


# Corner Lots

## The Redlands

3 Bedrooms | 3.5 Baths  
2,596 Heated Square Feet

Dimensions  
31' 10" wide x 69' 7" deep







# Corner Lots



## Nantahala

3 Bedrooms | 2.5 Baths  
2,491 Heated Square Feet  
Dimensions  
50' 4" wide x 42' 2" deep

